

Revised: 08.2023

# PENNSYLVANIA JUVENILE JUSTICE SYSTEM TRENDS 2009-2022

As Pennsylvania moves towards systematically integrating data-driven policies and practices, stakeholders must continuously track the performance and outcomes of such activities to ensure they are promoting positive outcomes for youth. These measures provide a clear picture of the impact of new initiatives on key justice measures, such as the arrest rate and placements.

## \$216 Million

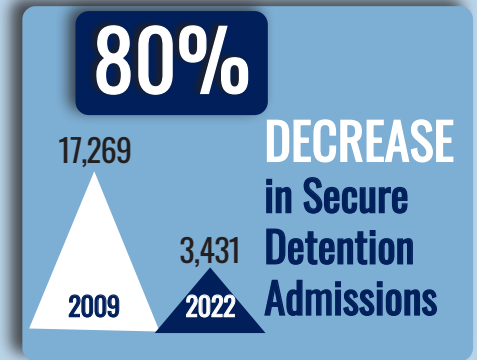
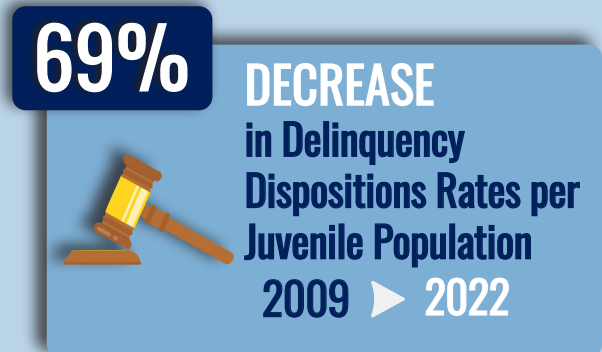
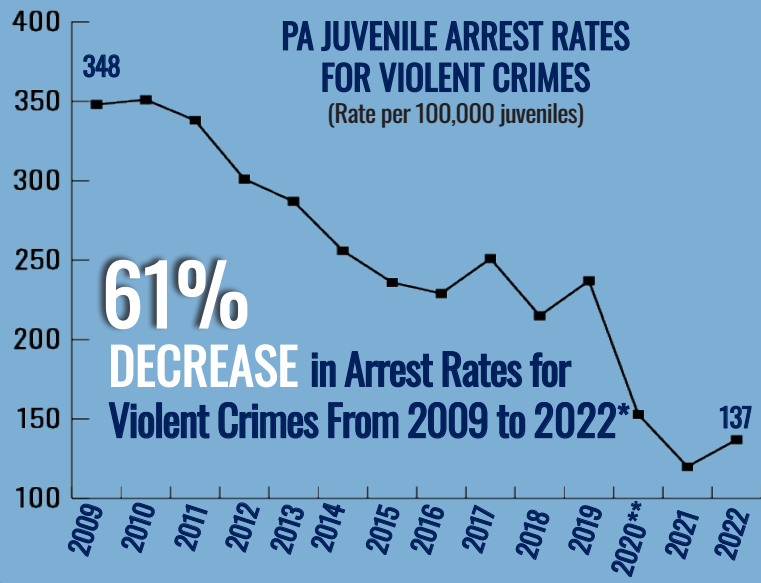
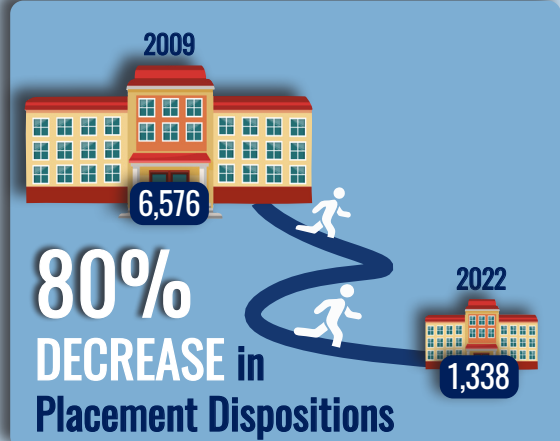


**FEWER** Dollars Spent on Delinquency Placements in FY 21-22 Than FY 08-09\*\*\*

## 1.5 Million



**FEWER** Days of Care in FY 21-22 Than FY 08-09\*\*\*



\*Data Is from PA State Police Uniform Crime Reports and the United States Census Bureau.  
\*\*Denotes the Onset of the COVID-19 Pandemic.  
\*\*\*Data Is from the PA Department of Human Services' Office of Children, Youth, and Families.