

Restorative Justice: What Experience Has Taught Us

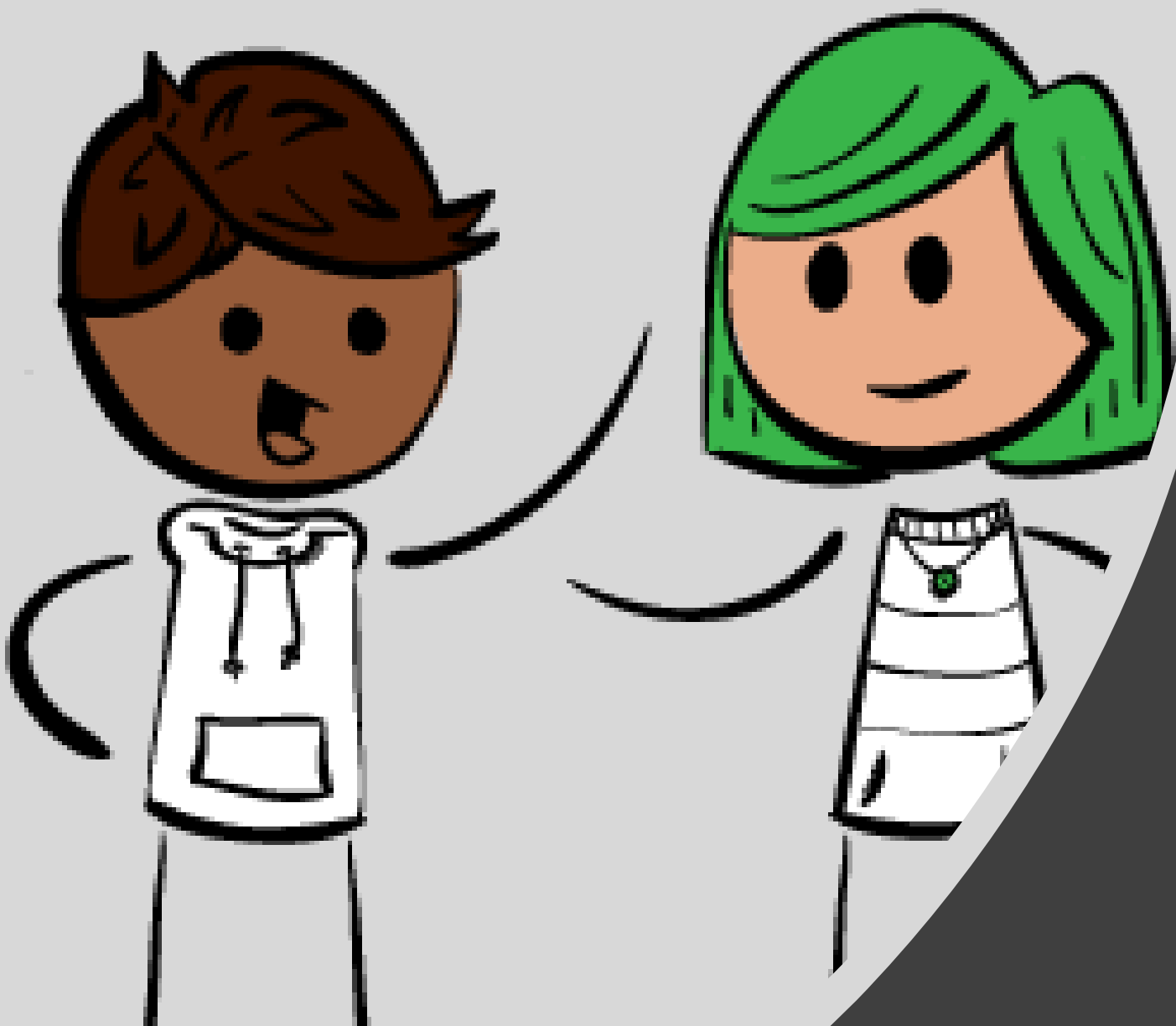
A partnership between Advoz and
Lancaster Co. Juvenile Probation





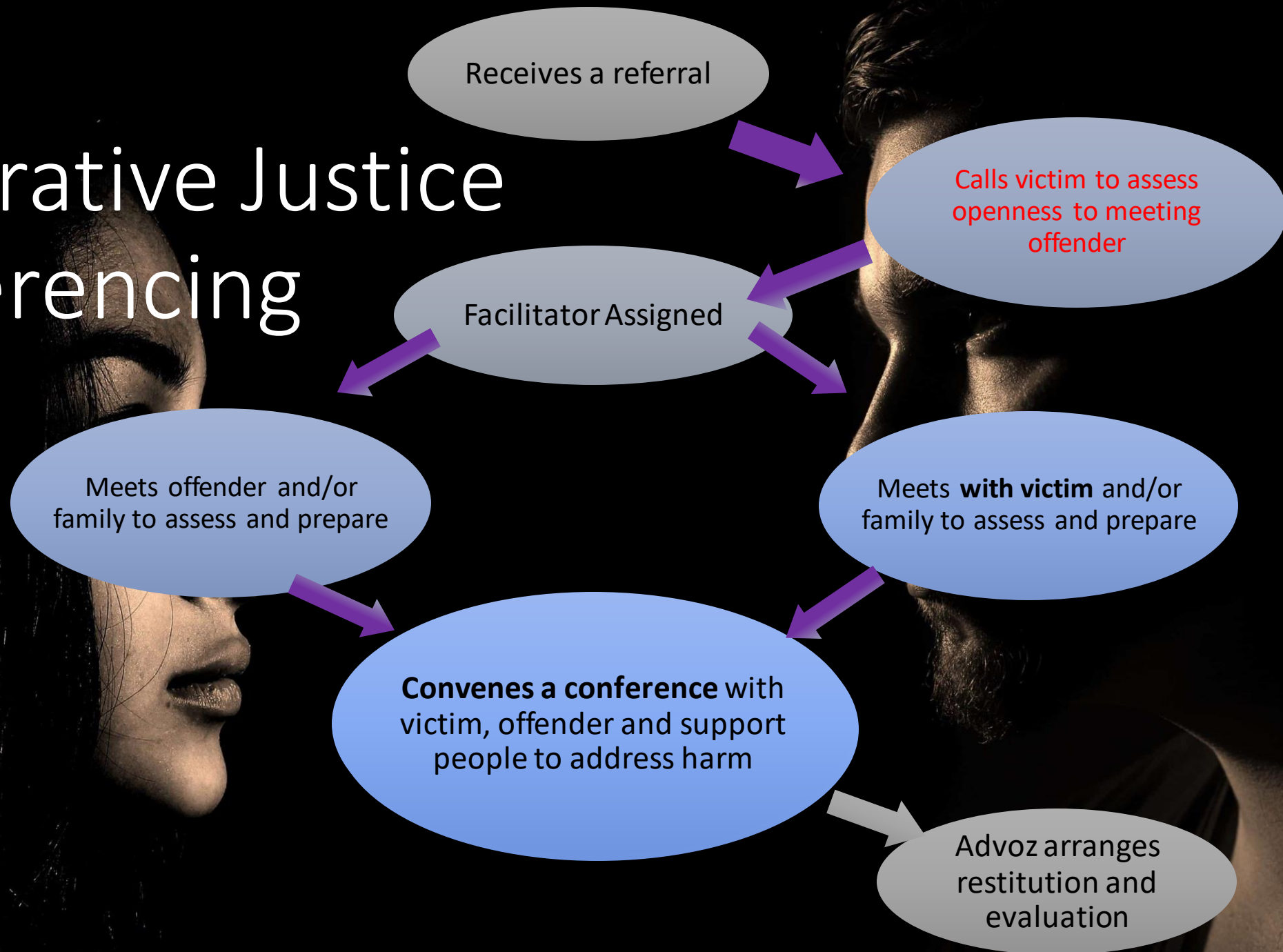
Where we are headed...

1. Get connected and warm up to the topic of RJ
2. Experience the process of victim-offender conferencing
3. Review Lancaster County's Learnings
 - a. Best Practices
 - b. Challenges
 - c. Other Models
4. Time for questions

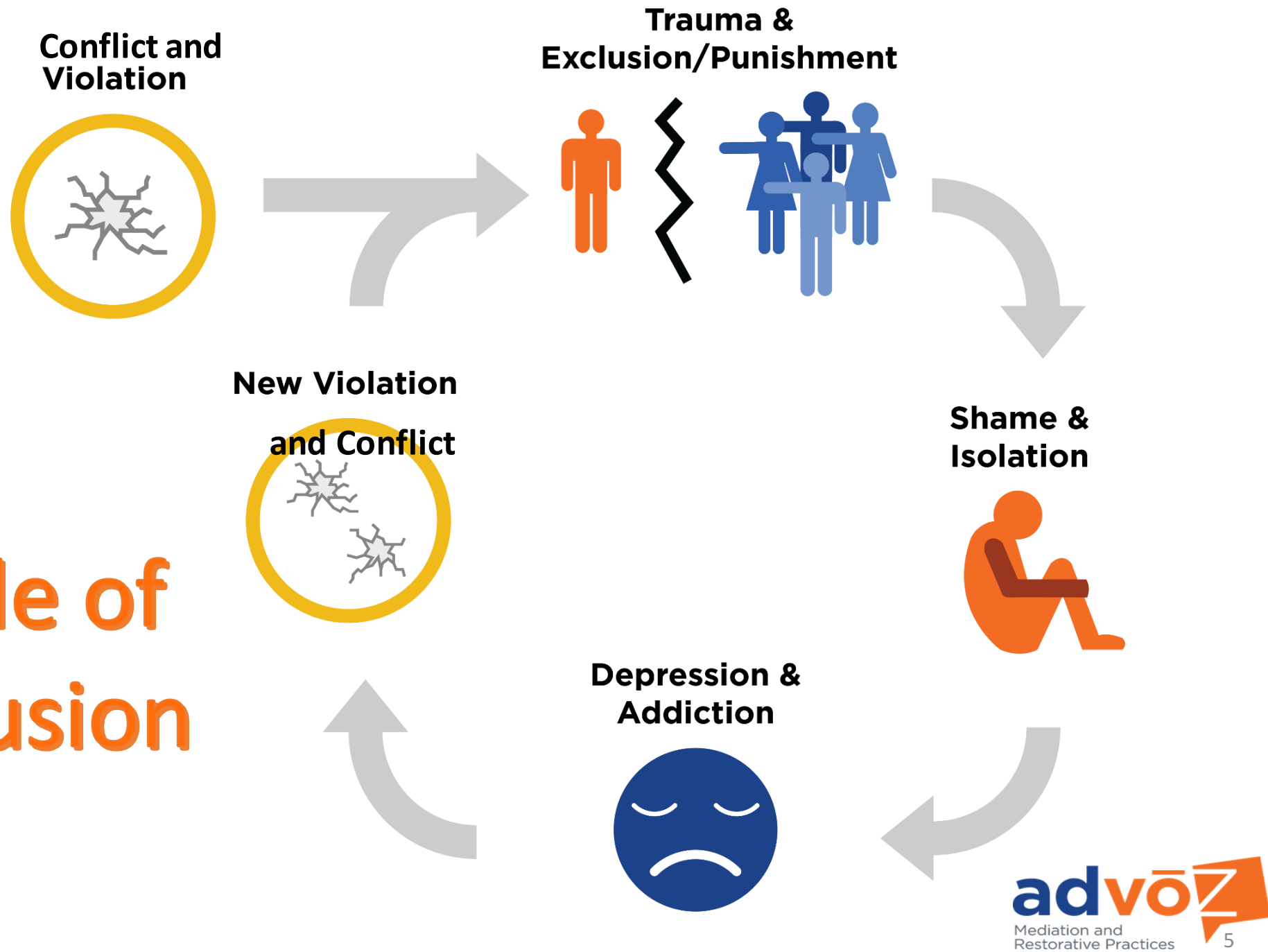


Let's Babble!

Restorative Justice Conferencing



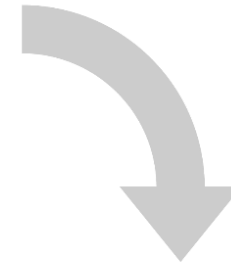
Cycle of Exclusion



Conflict and Violation



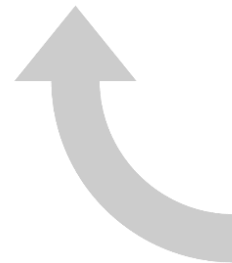
Inclusive, Restorative Response



Accountability & Relationship



Positive Contributions to School, Family, Work



Resilient, Healthy Response to Next Crisis



Cycle of Inclusion

Justice Asks...

Retributive Justice

- *What law was broken?*
- Who did it?
- What do they deserve?

Crime is against the state

Restorative Justice

- *Who was harmed?*
- What are their needs?
- Whose obligations are these needs?

Crime (Harm) is against real people

Our Story

- a. Best Practices
- b. Challenges
- c. Other Models





Questions



Stay In Touch

- Krista Rittenhouse : Advoz Director of Restorative Practices
 - 717-397-2404
 - krista@advoz.org
- Mike McCartin: Supervisor at Lancaster County Juvenile Probation
 - 717-299-8161
 - MMcCartin@co.lancaster.pa.us



THANK YOU!!

